

DIGITAL VIDEO PEN



THANK YOU FOR PURCHASING THE DIGITAL VIDEO PEN

Please read this manual before operating the Digital Video Pen and keep it handy.

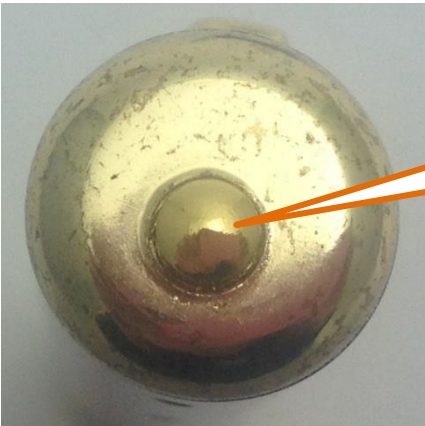
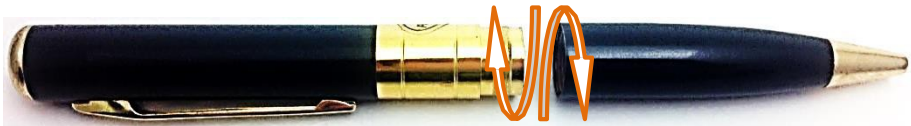
Our line of covert pen DVRs are not just for spies. Psychological research shows that students will forget 20% of their lectures within hours. This doesn't just apply to students, but to people attending conferences, business meetings, and presentations. Taking notes with this fully functional pen will help you remember important highlights and pay attention, and the hidden DVR will give your memory that extra boost by allowing you to replay the high fidelity audio and video recording later in the week.

This product records 1280*960 resolution video. This device takes both video recordings and photographs, all with the click of a single button. Files are stored to the micro SD card storage (not included) and are easily accessible by connecting to the PC using the included USB cable.

Your purchase should include:

- 1 x Economy Pen DVR
- 1 x USB cable
- 1 x A/C adapter
- 1 x Instruction Booklet

GET FAMILIAR WITH YOUR DIGITAL VIDEO PEN



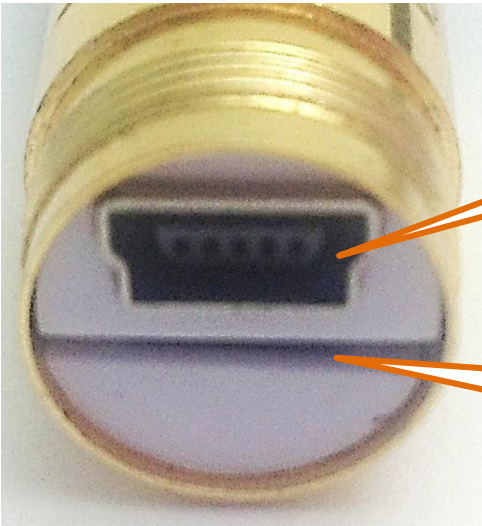
Power/ Record
Button



Indicator
Light



Lens



USB Port

Micro SD
Card Slot

OPERATING THE DIGITAL VIDEO PEN

IMPORTANT NOTICE: Allow the device to charge 4 – 6 hours before using.

HOW TO CHARGE THE ECONOMY PEN DVR

Using the A/C Charger

1. Plug the A/C adapter into a power source such as an outlet
2. If the red A/C light is on, then power is being fed to the adapter
 - If the red light is not on, try a different outlet
3. Connect the USB charging cable to the A/C adapter
4. Make sure the pen is turned off
5. Connect the USB charging cable to the camcorder pen
 - The Indicator Light will flash red while charging
 - When the Indicator Light is solid red, the pen is fully charged

Using Your PC

1. Plug the USB charging cable into your laptop or desktop PC
2. Make sure the pen is turned off
3. Connect the USB charging cable to the camcorder pen
 - The Indicator Light will flash red while charging
 - When the Indicator Light is solid red, the pen is fully charged

HOW TO TURN THE ECONOMY PEN DVR ON

1. Press and hold the Power Button for about 2 seconds
 - The Indicator Light will be green
 - The pen is in **standby mode**

HOW TO TURN THE ECONOMY PEN DVR OFF

1. Press and hold the Power Button for about 2 seconds
 - The Indicator Light will blink green then red, and then go out
 - The pen is now off

HOW TO RECORD VIDEO

1. Put the pen into **standby mode**
2. Push and hold the Record Button for 1 second and the green light flashes 3 times
 - The pen is now recording live video
 - The green light will blink once every second while recording
3. Push the Record Button again to stop recording
 - The green light will flicker and then remain solid
4. To resume recording, simply repeat step 2.

NOTICE: If either the memory or battery is about to run out, the pen will automatically stop recording and save your files.

HOW TO TAKE PHOTOGRAPHS

1. Put the pen into **standby mode**
2. Push and release the Record Button
 - The green light will blink once
 - The pen has taken a photograph
 - If the red light blinks, the pen did not take a photograph

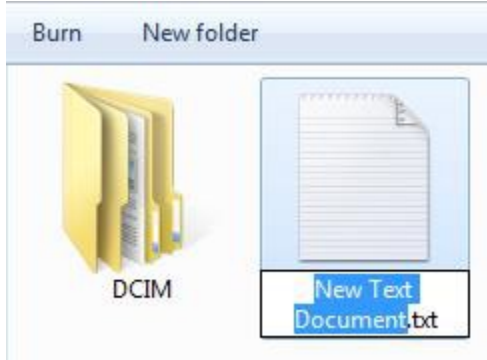
HOW TO RESET THE TIME AND DATE STAMP

1. Plug the device into your PC using the USB cable
2. Turn on the device
3. Locate "Removable Disk" inside the (My) Computer folder
 - Go to Start > Computer > Removable Disk

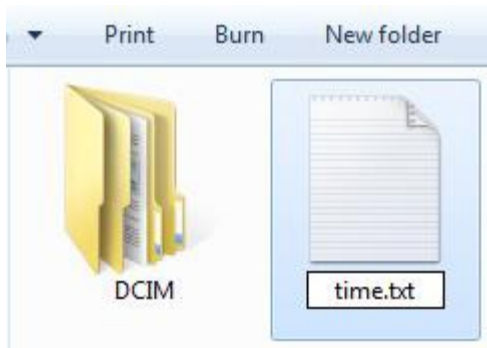


4. Open the Removable Disk drive

5. Right click with your mouse
6. Scroll down to "New"
7. Click "Text Document"
8. **Rename "New Text Document" as "time"**
The title must be in all lowercase letters!



Before Step 8



After Step 8

9. Open the text document
10. Enter the current date in Year-Month-Day format
11. Enter the current time in military format
 - Example:
2013-03-22 16:37:50 Y
12. Save the text document
13. Unplug the device from your PC

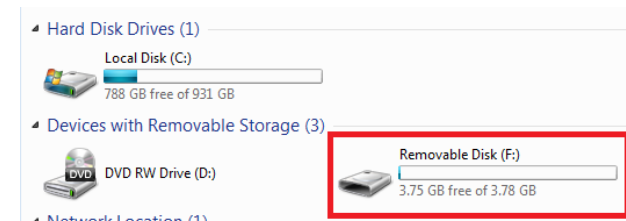
RETRIEVE THE FILES TO YOUR PC

1. Plug the device into your PC using the USB cable
2. Locate "Removable Disk" inside the (My) Computer folder
 - AutoPlay Removable Disk > Open folder to view files



Or...

- Go to Start > Computer > Removable Disk



3. Open the Removable Disk drive
4. Open the PHOTO folder to view your photographs
5. Open the VIDEO folder to view your videos
6. Double click the file you want to view

- VLC Player is recommended for watching videos

TROUBLESHOOTING

THE DEVICE WON'T TURN ON

- Charge the device for at least 4 hours before the first use
- Make sure the charging cable is securely inserted into the device and into the power source

THE DEVICE WON'T TURN OFF

- The pen may have locked up; reset the device.

THE DEVICE ISN'T CHARGING

- Replace the battery or charging cable
- If you are charging via a wall power source, you may need to charge via your PC. The AC adapter might be bad

MY COMPUTER DOESN'T RECOGNIZE THE DEVICE

- Unplug the device from your PC and reboot the device
- Unplug the device from your PC and reboot your PC
- Try using a different USB slot on your PC
- Replace the USB cable

THE SOUND OR VIDEO IS UNCLEAR

- The device needs charging

NEW FILES ARE REPLACING THE OLD FILES STILL ON MY DEVICE

- Once the SD card is full, the newest files will begin to replace the oldest files.
- On a regular basis, you need to cut & paste the old files from the device to a separate folder on your PC.

WHEN I TURN THE PEN ON, THE RED LIGHT IS FLASHING 3 TIMES

- There is no SD card in the slot.
- The pen does not recognize the SD card.

- Take the card out and put it back in

THE RED LIGHT IS FLASHING 6 TIMES AND THEN TURNING OFF

- The SD card memory is full

THE GREEN AND RED LIGHT FLASH AT THE SAME TIME AND THEN TURN OFF

- The battery power is low

OTHER PROBLEMS

- Call our technical support at **770-694-6921**

SPECIFICATIONS

Video Resolution	1280*960
Video Format	AVI
Frames per Second	30fps
Photo Resolution	3840*2880
Photo Format	JPEG
Max. Memory	16GB Micro SD Card
Player Software	Media Player VLC Player - Recommended
USB Interface	Mini USB
Operating System	Windows me Windows 2000 Windows 2003 Windows XP Windows Vista Windows 7 Windows 8