

# LED and Night Vision Light Bulb Camera



## THANK YOU FOR PURCHASING THE LED AND NIGHT VISION LIGHT BULB CAMERA

---

Please read this manual before operating the LED and Night Vision Light Bulb Camera and keep it handy.

The HCBulb is a genius combination of regular LED light bulb and security light thanks to its built in camera and automatic night vision. Put in a MicroSD card and screw it in to any standard light bulb socket and this device immediately starts recording everything it sees. The included simple remote control makes controlling the bright LED lighting easy from anywhere in the room, so not only does this bulb have a hidden camera, it's an improvement on all other lighting that does not have a remote control.

The included software program makes it easy to change the time and date, recording resolution, recording overwrite, as well as the recording mode. The HCBulb has fantastic video compression and recording methods that keep the video file size down, making it possible to record and store large amounts of video. In the constant recording mode, the frame rate is slowed down when there is no movement in order to save as much space as possible. When motion is detected in this mode the frame rate goes back to full speed.

Your purchase should include:

- 1 x LED and Night Vision Light Bulb Camera
- 1 x LED Extension
- 1 x Remote
- 1 x MicroSD USB Adapter
- 1 x Software Disc
- 1 x Instruction Booklet

## GET FAMILIAR WITH YOUR LED AND NIGHT VISION LIGHT BULB CAMERA

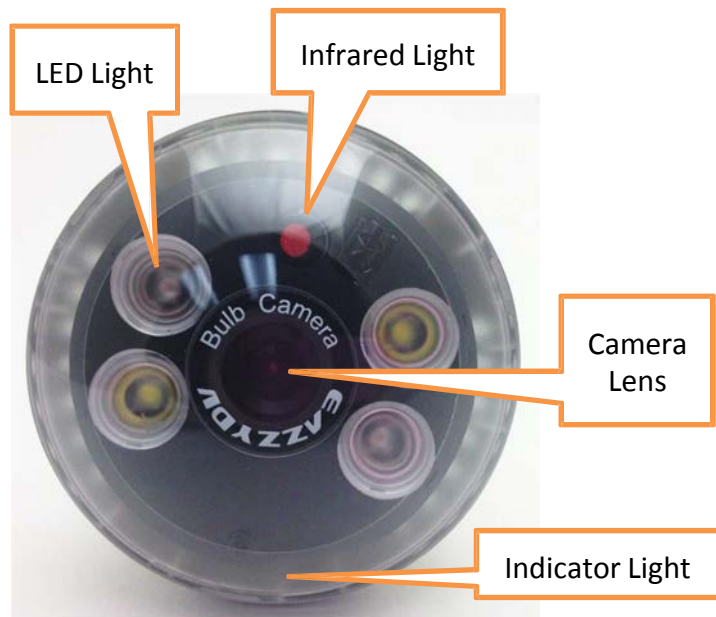


Figure 1: Light Bulb Front

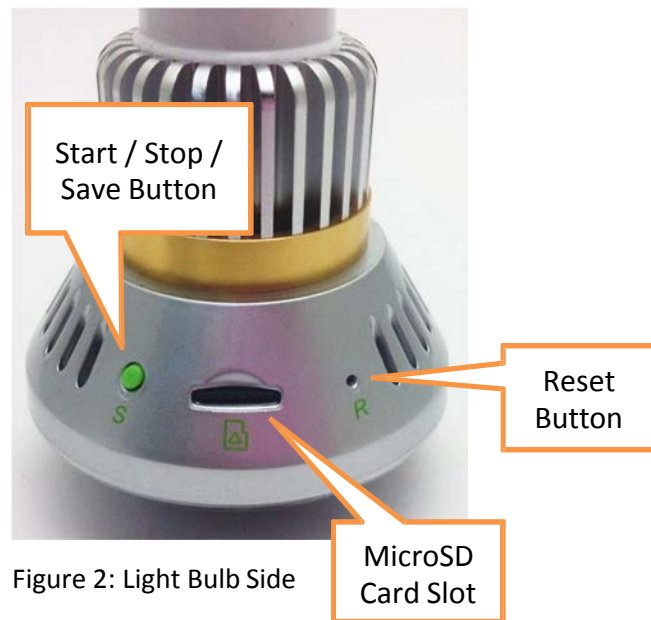


Figure 2: Light Bulb Side



Figure 3: MicroSD Card Reader



Figure 4: Extension Rod



Figure 5: Remote

## OPERATING THE LED AND NIGHT VISION LIGHT BULB CAMERA

---

### IMPORTANT NOTICE:

- 1. Before replacing your standard light bulb with the light bulb camera, make sure the power to the light socket is off.*
- 2. Hold the plastic enclosure of the camera during installation or removal to ensure safety*
- 3. If the camera runs for more than 2 hours with the IR light on, the plastic case will be warm, but should not be hot. When the IR light turns off, the plastic should cool.*

### HOW TO SET UP THE LIGHT BULB

1. Install an MicroSD card into the slot (see Figure 2)
2. Screw the light bulb into a socket
3. Push the ON button on the remote
  - The blue and red indicator lights will be on
  - The red light will turn off and the blue light will stay on
  - If the red light is on, that means the MicroSD card has a problem
    - Take the card out, format the card, and insert the card again

### HOW TO INTERPRET THE INDICATOR LIGHTS

- The blue and red lights on at the same time means the camera is in standby mode
- The blue light on by itself and flashing means the camera is recording live video based on motion detection
  - You can turn off the indicator light using the change functions procedure
- The blue light on by itself, flashing quickly three times, and then turns off means the camera is recording live video based on motion

- You can turn on the indicator light using the change functions procedure
- The red light on by itself means the MicroSD card has a problem
  - Take the card out, format the card, and insert the card again

### HOW TO SOFT STOP RECORDING

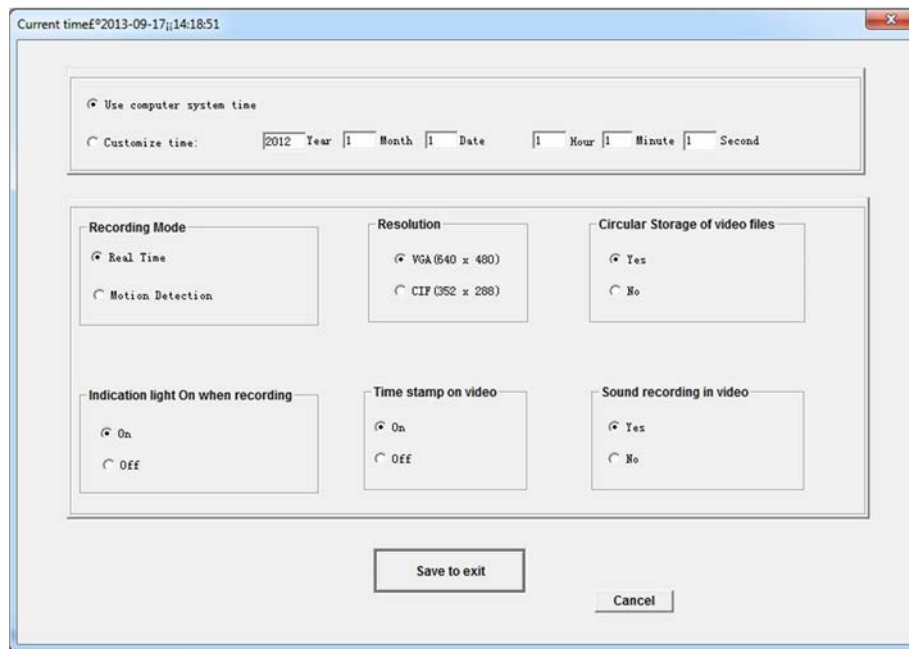
1. While the camera is recording, push the Stop Button (see Figure 2)
  - The blue and red indicator lights will turn on
    - The camera is in standby mode
2. Wait 3–5 seconds
3. Push the MicroSD card to eject it
  - The red indicator light will turn on
4. If you change your mind, leave the card in the slot
5. Push the Start Button (see Figure 2)
  - The blue indicator light will flash
    - The camera is recording
6. If you take the card out, insert the card again
7. Wait 10 seconds
  - The blue indicator light will flash
    - The camera is recording

### HOW TO HARD STOP RECORDING

1. Push the OFF button on the remote
2. Wait 3–5 seconds
3. Push the MicroSD card to eject it
4. To start recording again, just insert the card and push the ON button on the remote

## CHANGE FUNCTIONS PROCEDURE

1. Put the card into the reader (see Figure 3)
2. Plug the reader into your PC using the USB port
3. Insert the software disc into the disc drive on your PC
4. Double-click the “English” folder
5. Right-click the “USERSET TOOL” folder and select “Copy”
6. Locate and open the “SD Card” drive inside the (My) Computer folder
7. Right-click in the empty area and select “Paste”
8. Double-click the “USERSET TOOL”
9. Open the “UserSet” application program



10. Click to choose the functions you want to change
11. Click “Save to exit”
12. Eject the MicroSD card reader
13. Insert the MicroSD card into the light bulb
14. Turn on the power
  - The changes will automatically apply

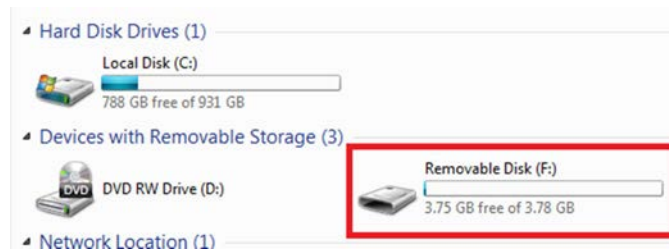
## RETRIEVE THE FILES TO YOUR PC

15. Either soft stop or hard stop the recording
16. Put the card into the reader (see Figure 3)
17. Plug the reader into your PC using the USB port
18. Locate "SD Card" inside the (My) Computer folder
  - AutoPlay SD Card > Open folder to view files



Or...

- Go to Start > Computer > SD Card



19. Open the Removable Disk drive
20. Open the Video folder
21. Open the RECORD folder
22. Double click the file you want to view
  - VLC Player is recommended for watching videos

## TROUBLESHOOTING

### THE DEVICE WON'T TURN ON

- Charge the device for at least 4 hours before the first use
- Make sure the charging cable is securely inserted into the device and into the power source

### THE DEVICE HAS CRASHED

- You need to reset the device
  - Push the reset button (see Figure 2)

### MY COMPUTER DOESN'T RECOGNIZE THE DEVICE

- Unplug the device from your PC and reboot the device
- Unplug the device from your PC and reboot your PC
- Try using a different USB slot on your PC
- Replace the USB cable

### THE SOUND OR VIDEO IS UNCLEAR

- The need to reset the device
  - Push the reset button (see Figure 2)

### OTHER PROBLEMS

- Call our technical support at **770-694-6921**

## SPECIFICATIONS

<b>Video Resolution</b>	640*480
<b>Video Format</b>	3GP
<b>Frames per Second</b>	12fps
<b>Recording Time</b>	4–7 days
<b>Vision Angle</b>	90°
<b>Motion Detection</b>	Yes
<b>Water Resistant</b>	No
<b>Battery Life</b>	Unlimited Direct-to-Source
<b>Type of Memory</b>	MicroSD Card
<b>Memory Capacity</b>	32GB
<b>Recording Capacity</b>	Up to 7 days
<b>USB Interface</b>	2.0 USB
<b>Player Software</b>	VLC recommended
<b>Operating Systems</b>	Windows 2000 Windows Me Windows XP Windows Vista Windows 7 Windows 8 Mac OSX Linux