

MINICLOCKPRO 720P



THANK YOU FOR PURCHASING THE MINICLOCKPRO 720P

Please read this manual before operating the MiniClockPro 720p and keep it handy.

This model is lightweight and about the size of a Smartphone, making it perfect for pocket or suitcase travel. You can record 10 hours of clear 1280*720 resolution video using either the continuous video recording mode or the motion detection mode. In addition to this great new camera, there will be no indicator light during any of the recording modes, so can never draw undue attention.

The camera is even capable of a 120° viewing range so it can follow the movements of anyone who walks through the room. When it comes to storing all this vital footage, the mini clock travel portable 720p supports MicroSD card storage ranging from 2GB – 32GB. Not only is this a covert camera, but it is also a functional clock with a display that shows the current time, date, and day of the week all at once.

Remote control operation

Motion detection

Record while charging on included AC adapter

No indicator light while in record mode

Your purchase should include:

1 x Mini Clock Travel Portable High Definition

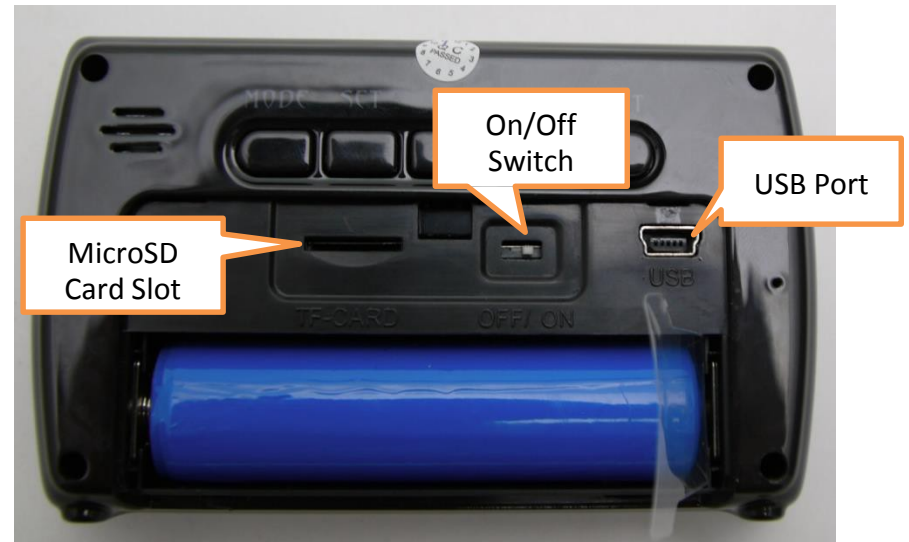
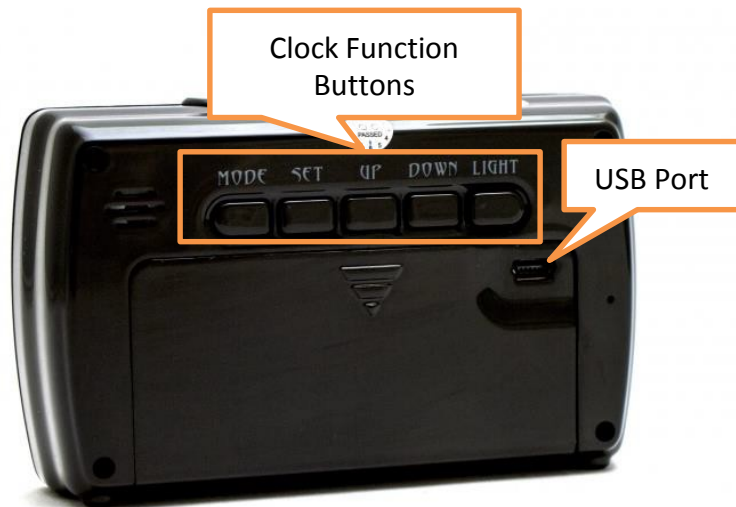
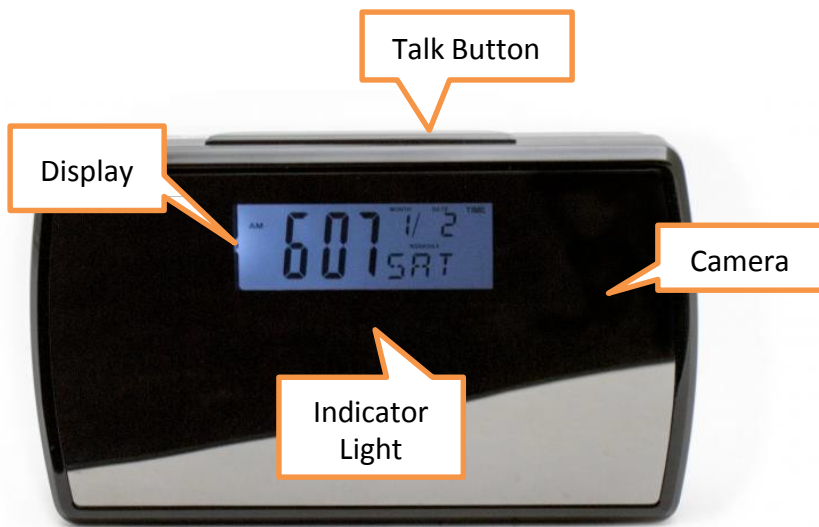
1 x Remote Control

1 x Charging AC adapter

1 x USB Cable

1 x Instruction Booklet

GET FAMILIAR WITH YOUR MINICLOCKPRO 720P



IMPORTANT NOTICE: Allow the device to charge 4 – 6 hours before using.

To charge your device, plug the charging cable into the power input on the right-hand side on the back of the device.

While charging, the red indicator light will be on.

SETTING THE TIME AND DATE

TIP: Press the Up button on the back of the device to switch between civilian and military time.

HOW TO SET THE TIME

1. Push the SET button on the back of the device. The hour should be blinking.
2. Push the UP or DOWN button until the LCD display reads the current hour.
3. Push the SET button again. The minutes should be blinking.
4. Push the UP or DOWN button until the LCD display reads the current minute.

HOW TO SET THE DATE

5. Push the SET button again. “2010” should be blinking on the LCD display.
6. Push the UP button on the back of the device until the LCD display reads the current year.
7. Second, you will set the month and day.

HOW TO SET THE CURRENT DAY

1. Push the SET button again. There should be a “1” blinking on the left side of the LCD display. This is the month.
2. Push the UP or DOWN button until the number on the left side reads the current month.
3. Push the SET button again. There should be a “1” blinking on the right side of the LCD display. This is the day.

4. Push the UP or DOWN button until the number on the right side reads the current day.
5. Press the set button again.

HOW TO SET THE VIDEO TIME AND DATE STAMP

1. Connect the device to your computer with the USB cord.
2. Power the device on using the remote, and wait for indicator light to turn blue.
3. Auto-play will open your computer.
4. Select “open folder to view files.”
5. In the drive’s folder, create a text document and save it under the name “time.”
6. Drag this file into the folder DCIM.
7. Open the time document and enter your current time and date as: year month day hour minutes. (Ex: 2014 07 07 11:23)
8. Once the text document is formatted, power your device off.

HOW TO SET THE ALARM

1. Push the MODE button on the back of the device.
 - A bell icon will appear
2. Push the SET button on the back of the device.
 - The hour should be blinking
3. Push the UP or DOWN button to set the hour for which you want the alarm to sound.
4. Push the SET button again.
 - The minutes should be blinking.
5. Push the UP or DOWN button to set the minute for which you want the alarm to sound.
6. Push the SET button again. The LCD display should read with a “01.”
7. This is the snooze.
8. Snooze can last from 1 – 60 minutes.
9. Push the UP or DOWN button to set the snooze time.
10. Push the SET button again. The LCD display should read with a “1.”
11. This is the alarm ring.

12. There are 6 rings from which to choose
13. Rings 1 – 5 are nature sounds.
14. Ring 6 is a repetitive buzz.
15. Push the MODE button on the back of the device to exit the alarm.

*NOTICE: You have only **set** the alarm with these steps.*

HOW TO TURN THE ALARM ON

1. Push the MODE button on the back of the device.
2. Push the UP button on the back of the device.
 - The alarm icon located next to the date on the display screen should be on.
3. Push the MODE button to exit the alarm.
4. Repeat steps 1 – 4 to turn the alarm off.
5. To stop the alarm after it sounds, press the button on top of the device.

OPERATING THE MINICLOCKPRO 720P

PREPARING THE DEVICE FOR USE

1. Be sure the small white switch— located beneath the plastic battery panel and to the left of the power input — is switched from OFF to ON.
2. Insert a MicroSD card into the slot located to the left of the on / off switch.
3. Make sure your mini clock travel has been fully charged.
4. Place the device where you want to record.

HOW TO TURN THE CAMERA ON

1. Push the POWER button on the remote.
 - The blue indicator light on the front of the mini clock will turn on

TIP: If the blue indicator light flashes and then turns off there is no MicroSD Card in the MicroSD Card slot.

HOW TO VIDEO RECORD

1. Push the RECORD button on the remote.
2. The blue indicator light will flash 3 times before turning off.
 - The camera is now recording live video.
3. Push the RECORD button on the remote to stop live video recording.
 - The blue indicator light will turn on.

HOW TO TAKE PHOTOS

1. Push the PHOTO button on the remote.
 - The blue indicator light will blink once.
 - Your photo has been saved.

HOW TO USE MOTION DETECTION

1. Push the MOTION DETECTION button on the remote.
 - The blue indicator light will stay on until the camera detects motion.
 - Once motion is detected, the blue indicator light will blink and turn off, which means the camera is recording.
2. Push the MOTION DETECTION button on the remote again to turn off the motion detection recording.
 - The blue indicator light will turn on.

HOW TO RECORD AUDIO

1. Press the AUDIO Button
 - The blue indicator light will blink twice and then turn off
 - Your audio is being recorded
2. Press the AUDIO button on the remote again to turn off the audio recording
 - The blue indicator light will turn on

HOW TO TURN THE CAMERA OFF

1. Push the POWER button on the remote until the blue indicator light on the back of the mini clock turns off.

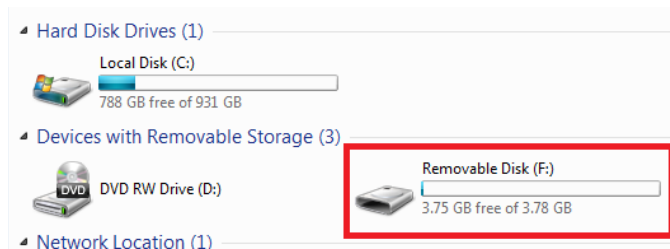
RETRIEVE THE FILES TO YOUR PC

1. Plug the device into your PC using the USB cable
2. Push the POWER Button on the remote.
 - The blue indicator light will turn on
3. Locate "Removable Disk" inside the (My) Computer folder
 - AutoPlay Removable Disk > Open folder to view files



Or...

- Go to Start > Computer > Removable Disk



4. Open the Removable Disk drive
5. Open the DCIM folder
6. Double click the file you want to view
 - VLC Player is recommended for watching videos

HOW TO SET THE TIME AND DATE STAMP

1. Connect the device the device to your computer as described in the previous step
2. Where you see DCIM folder, in the white space below the fold (**not** on or in the folder), right click and choose "New" then "Text Document"
3. Name it "time" and hit "Enter" on your keyboard.
4. Double left click on the file to open it. It should open up in Notepad.
5. Enter the time and date in the following format:
2014 08 15 14:57
6. This will change the time and date to 08/15/2014 2:57 PM
 - a. Note: the time **must** be in Military format
7. Click on "File" then "Save"
8. Close Notepad
9. You can now remove the device from your computer and power it on.
10. Once powered on, the device will update the time and date according to the file. All future files will have a correct time and date stamp. It will not apply to previously recorded videos.
11. When you next connect the device to your computer, if the format of the time file was correct, it should have disappeared. If the file still remains, the time and date was not updated properly. Please review the above steps and try once more. The most common issues is accidentally naming the file "time.txt.txt" Most computers hide file extensions by default, so there should be no need to type ".txt" when initially naming the file in step 3.

TROUBLESHOOTING

THE DEVICE WON'T TURN ON

- Charge the device for at least 4 hours before the first use
- Make sure the charging cable is securely inserted into the device and into the power source

THE DEVICE ISN'T CHARGING

- Replace the battery or charging cable
- If you are charging via a wall power source, you may need to charge via your PC. The AC adapter might be bad

THE DEVICE HAS CRASHED

- You need to reset the device

MY COMPUTER DOESN'T RECOGNIZE THE DEVICE

- Unplug the device from your PC and reboot the device
- Unplug the device from your PC and reboot your PC
- Try using a different USB slot on your PC
- Replace the USB cable

THE SOUND OR VIDEO IS UNCLEAR

- The device needs charging

OTHER PROBLEMS

- Call our technical support at **770-694-6921**

SPECIFICATIONS

Video Resolution	1280x720
Video Format	AVI
Frames per Second	30
Vision Angle	120
Motion Detection	Yes
Water Resistant	No
Battery Life	10 hours
Type of Memory	MicroSD Card
Memory Capacity	32GB
Recording Capacity	2GB ≈ 1 hour 4GB ≈ 2 hours 8GB ≈ 4 hours 16GB ≈ 8 hours 32GB ≈ 16 hours
USB Interface	2.0 USB
Player Software	VLC recommended
Operating Systems	Windows 2000 Windows Me Windows XP Windows Vista Windows 7 Windows 8 Mac OSX Linux